

# Manali<sup>DC</sup>

**rare BULL SALE**

**Friday 31st July, 2015 at 2pm**  
**44 Limousin & Lim-Flex Bulls**

**"Yarramac" Yarrandi Road SCONE**



Proudly  
Supporting



**View bull videos at - [www.manali.com.au](http://www.manali.com.au)**

# Manali<sup>DC</sup>

## rare BULL SALE

**Manali is proud to offer the pick of 2 bulls, with 100% of the proceeds going to the Steve Waugh Foundation**



### **Lot 1 - Manali J141**

Top 5% Gestation Length, Self Replacing Index and Heavy Steer Terminal Index. Top 10% Birth Weight, Mature Cow Weight, Vealer Terminal Index and Domestic Terminal Index. A horned son of the 2013 Sale Topper from a great producing young cow. I believe this calf is the most like his sire in his depth and softness. A bull of this quality is definitely befitting of this wonderful cause.



### **Lot 2 - Manali J2**

Top 1 % Birthweight, Top 5% Gestation Length & Scrotal Size. A really safe sire for first calving heifers. He is a 50/50 Lim-Flex bull that is quiet and predictable. Deep girthed and soft.



Proudly  
Supporting



STEVE WAUGH FOUNDATION

The Steve Waugh Foundation has provided help to over 400 families that receive little or no support from anyone to fund critical medicine, treatment and specialised equipment. The benefit & quality of life to all assisted has been inspirational and life changing.



ALEXANDER DOWNS

### **FEATURE LOT**

Alexander Downs grain fed cut up body of beef, sired by Manali Sudden Impact G130. Finished at Alexander Downs Merriwa. Alexander Downs produces the highest quality Beef and Duroc Pork. Alexander Downs also delivers Premium Stock feeds throughout the Hunter.

# Manali<sup>CC</sup>

## rare BULL SALE

**Friday 31st July, 2015**

**2pm**

**“Yarramac” Yarrandi Road, SCONE**

### **44 Limousin & Lim-Flex Bulls**

All bulls semen tested, vet inspected with full scan data available.

---

## **Market Focused and Industry Driven!**

---

Bull videos at

**[www.manali.com.au](http://www.manali.com.au)**

Inspections welcome any time!

Offering 2% rebate to outside agents, introducing buyers in writing prior to sale.

#### **Contacts:**

##### **The MacCallum Family**

Ph 02 6545 7292

Jim MacCallum 0428 680 502

Peter MacCallum 0429 492803

[lynda@manali.com.au](mailto:lynda@manali.com.au)

**Manali<sup>CC</sup>**  
*Limousin and Lim-Flex*

##### **MacCallum Inglis**

Ph 02 65 40 1200

Stuart Sheldrake 0403 129 357

Craig Devine 0438 451744

Heath Nichols 0458 717192

**M**  
**INGLIS**  
MacCallum Inglis

## Welcome to the Manali **rare** Bull Sale

On behalf of the MacCallum Family, we would like to extend a warm welcome to our 3rd Annual Manali Limousin and Lim-Flex **rare** Bull Sale. 44 high quality Limousin & Lim-Flex Bulls will be presented in the same unique format as last years' sale.

The genetics of these young sires have once again been bred and sourced from some of the most progressive Limousin and Lim-Flex seed-stock operations in North America. Genetics from the Coleman and Hager Families feature prominently. We are also excited to include yearling bulls for the first time of which two bulls come from the highly successful Oakvale Limousin Stud. Manali Fiction F53's performance in carcase competitions in the last 12 months is nothing short of phenomenal.

Four yearlings sell that are flush brothers to the sale topping bulls at the recent Hager Cattle Company Bull Sale in North Dakota.

We are also particularly excited to have sons in the sale sired by the Coleman embryo sons that were so well received in the first sale.

We are particularly excited to be offering the pick of Lot 1 and Lot 2 for the Waugh Foundation's **rare** program, supporting children with rare diseases.



The cattle market has never in my lifetime been as exciting. We hope our genetics can lead to increased profits through higher yields, easy doing and the ability to finish.

*The MacCallum Family*

Manali Limousin & Lim-Flex. Scone, NSW, Australia.

# Manali<sup>CC</sup>

Limousin and Lim-Flex

*Performance that counts.  
We have the sire of your next champion.*

Progeny of Manali Bulls have enjoyed great success in the past 12 months.

**Some performances include:**

Grand Champion Steer Upper Hunter Beef Bonanza \* Grand Champion Steer Sydney Royal Easter Show  
Champion Heifer Upper Hunter Beef Bonanza

And numerous champions and placings on the Hoof and Hook at major shows around the country.



## A Message from the Steve Waugh Foundation

It's the third year of the Manali **rare** Bull Sale. We at the Steve Waugh Foundation are incredibly grateful for the support from the MacCallum family and YOU the Cattle Community!

We're putting out the call to inspire cattlemen and cattle groups around the country to come together to support children who are affected by a rare disease at the Manali **rare** Bull Sale, July 31st. Two special bulls will be auctioned as the first and second lots; with all proceeds donated to the Steve Waugh Foundation.

The Steve Waugh Foundation provides life changing support and champions the stories of those living with rare diseases - a supportive network for children and young adults (0-25years) with a rare disease that would otherwise have nowhere to turn. **WE ARE 'SOMEWHERE TO TURN'.**

1 in 10 Australians are affected by a rare disease, over 400,000 are children. We're all just one step away from it happening to us. It could be a child, your friend, a relative, anyone in your home town or community. Those impacted feel abandoned, isolated and alone.

Every child has a story to tell. The only Foundation of our kind in Australia, we are there for the children and families who face the challenges of a rare disease with 'strength of character' every day.



Our focus is their wellbeing and the difference we can make to their lives.

The Steve Waugh Foundation - Celebrating 10 Years in 2015

In just 10 years we are one of Australia's most respected charities. 'Strength of Character' is at the core of what we do, from the people we support to the people who help.

Generous donations go directly to life changing Individual Grants for medicine, specialised equipment, treatment and items that improve the quality of life for a child affected by a rare disease, as well as Respite Retreats for the whole family, and research.

We are the catalyst that brings together people, ambassadors, and companies who share our team spirit, passion and commitment; and make a conscious effort to work with partners who are socially responsible, enthusiastic and engaged.

***"NO ONE SHOULD STAND ALONE – EVERYONE NEEDS A TEAM TO SUPPORT THEM."***

Join us and make a 'no bull' offer on Lot 1 or 2 at the **rare** Bull Sale and a life changing gift to some very special rare kids. The bravery and determination of children and families affected by a rare disease call upon to meet everyday challenges, inspire us every day – we hope they do the same for you.

***'Somewhere to Turn'***  
**The Steve Waugh Foundation**  
**[www.stevewaughfoundation.com](http://www.stevewaughfoundation.com)**



## The History of

# Manali<sup>CC</sup>

The Manali stud commenced operation in 2004 with the purchase of Doug Robertsons' 'Turanville' Limousin herd in its entirety, setting a solid platform for the expansion of one of the largest Limousin and Lim-Flex seedstock operations in the country. Subsequent female purchases have been made from established Limousin studs such as Timor, King Creek, Mandayen, Kensal, White Lakes, Barwonga, and Angus studs including Blue Vale, Ardrossan and Tucklan Valley.

In recent years an extensive importation of embryos from Coleman Limousin Ranch and Hagar Cattle Company, both from the USA, has seen unique new genetics enter the country and the phenotype and quality of these cattle has blown us away. Also exclusive use of some of the Coleman's Sire battery has enabled some massive genetic diversity into our herd and bulls offered at this years' sale are mainly sired by these Coleman Bulls. Sires such as 'Cole First Down', one of the heaviest used sires in the USA in the last 20 years, has sons represented. Also available will be the first sons of AHCC Westwind W544, one of the most heavily used AI sires in the USA in the last 3 years. A third share in Westwind sold for \$56, 000 in 2013. His sons show high growth, thickness and softness.

The Manali bulls have been raised in big pastures and large contemporary groups in a highly commercial environment of 500 to 600 acre paddocks. They have not been artificially fed or pampered to alter temperament or body type. They have only had a minimal sale preparation on rye grass and a measured ration for the last 30 days and will be scanned, weighed, semen tested and vet inspected before sale day.

There will be no individual reserves and all bulls will be for sale from the opening bid. Bulls come with a 12 month guarantee and will be replaced or credited should a problem arise.

Our family has been selling cattle for over 40 years as Beef Graziers and Stock and Station Agents and we believe we understand the industry needs and requirements.

The focus of our cattle is cattle with big muscle patterns that can be easily finished, they are moderate in their growth patterns and have a loose, soft skin for ease of finish. We are incredibly proud of our product and are market focused and industry driven.



# Manali Sire Power

## AHCC Westwind W544 (HP\*) (HB\*) (PU)

Sire: Kajo Responder 120R

Dam: AHCC Miss Wulf Hunt R544



Gestation Length	200 Day	400 Day	600 Day	Scrotal Size	Doc
-3.5	+22	+40	+53	+1.5	+49

AHCC West Wind W544 was one of the most talked-about bulls to come out of Denver 2010. Out of the ever-consistent KAJO Responder bull and a COLE Wulf Hunt dam, West Wind puts together a powerful package. He's stout, displays phenomenal growth, and has style to burn. Other highlights include a solid set of numbers – five EPDs rank in the top 20% of the breed. Throw in the fact that he's homo black and homo polled, and it's a sure bet his offspring will have plenty of marketability.

## Cole First Down 46D (HP) (HB) (PN)

Sire: LKCC Tomahawks Touchdown 100X

Dam: 2 155P



Gestation Length	Birth Weight	200 Day	400 Day	600 Day	Milk	Scrotal Size	Doc
-1.2	0.0	+16	+38	+54	+8	+0.8	+62

First Down has proven to be one of the most complete breeding bulls that the Limousin breed has ever seen. The most proven Focus Dams in the Limousin breed are sired by First Down.

## Cole Windfall 144W (LF) (P) (B)

Sire: Coleman Production 608

Dam: Cole Miss First Down 6162S



Gestation Length	Birth Weight	200 Day	400 Day	600 Day	Scrotal Size	Doc
-6.2	-0.3	+17	+38	+59	+1.1	+36

Windfall was the top seller in the 2010 Coleman Sale. He scanned a 16.74 inch rib eye and 5.02% IMF. Windfall has tremendous thickness, depth, growth and carcass traits.



## BIRUBI THE DON FOCUS F058 (P) (B) (PN)

Stud Sire at Manali Limousin. This bull was the top priced bull at 2012 Birubi Limousin Bull Sale.



## MANALI FRAMEWORK F44 (P) (PU)

Stud Sire at Manali Limousin



**Tattoo:** MANPJ141  
**APRICOT**

**Born:** 19/07/2013  
**HORNED**

**Grade:** Pure

**Sire:** MANALI SUDDEN IMPACT G166 (MANPG166) (P) (B) (PU)

COLE BLACK TANK 24P (PEDPZ9838) (P) (B) (PU)  
COLE SUDDEN IMPACT 50S (IMUPB9839) (P) (B) (PN)  
COLE 100G (IMUPS9830) (P) (B) (PU)  
COLE FIRST DOWN 46D (IMUPP3731) (HP) (HB\*) (PN) (AC)  
COLE 50K (IMUPV9845) (P) (B) (PU)  
JHLL MS BITTERROOT 041B (PEDPM9844) (PU)  
WULFS RANSOM 3059R (IMUPA3059) (HP\*) (PU) (AA)  
ROMN TOW TRUCK 111T (IMUPC111) (HP\*) (R) (PN) (AA)  
ROMN RITA 28R (PEDPA9609) (P) (PU)

**Dam:** MANALI FANCY F20 (MANPF20) (P) (PU)

TURANVILLE ULTIMATE U3 (DHRPU3) (S) (PU)  
TURANVILLE NANOOK A4 (DHRPA4) (PU)  
TURANVILLE BLACK NANOOK V13 (DHRPV13) (PU)

LIMOUSIN BREEDPLAN EBVs								
Gest	B. Wt.	Cedir	Milk	200Wt	400W	600W	Scrotal	Doc
-6.7	+0.2	+2.7	+8	+21	+38	+56	+0.1	+48
59%	56%	25%	31%	57%	56%	65%	67%	48%

Top 5% Gestation Length, Self Replacing Index and Heavy Steer Terminal Index. Top 10% Birth Weight, Mature Cow Weight, Vealer Terminal Index and Domestic Terminal Index. A horned son of the 2013 Sale Topper from a great producing young cow. I believe this calf is the most like his sire in his depth and softness. A bull of this quality is definitely befitting of this wonderful cause.

**Purchaser:** \_\_\_\_\_ \$ \_\_\_\_\_





**Tattoo: MAN1J2  
BLACK**

**Born: 13/06/2013  
POLLED**

**Grade: Lim-Flex**

ANGUS BON VIEW NEW DESIGN 1407 (XAA0S1407) (HP) (PF)  
ANGUS SITZ NEW DESIGN 458N (XAA0Y458) (HP) (B) (PF)  
ANGUS SITZ ELLUNAS ELITE 3308 (XAA0X8479) (HP) (B) (PF)

**Sire: MANALI G15 (MAN1G15) (P) (B) (PU)**

WATERFORD MONSTER MAGIC (HASPA2) (P) (B) (PN)  
MANALI NANCY E23 (MANPE23) (P) (PU)  
TURANVILLE NANOOK A4 (DHRPA4) (PU)  
LKCC TOMAHAWKS TOUCHDOWN (IMUPJ8812) (HP) (HB) (PN) (AC)  
COLE FIRST DOWN 46D (IMUPP3731) (HP) (HB\*) (PN) (AC)  
2 155P (PEDPU8511) (P) (B) (PU)

**Dam: MANALI G108 (MAN1G108) (2P) (B) (PF)**

ANGUS MERRIC RIVERS PRIME TIME S22 (XAA0S9022) (HP) (PF)  
ANGUS MANALI BASE DAM Z13 (XAA0Z13) (HP) (PF)

LIMOUSIN BREEDPLAN EBVs								
Gest	B. Wt.	Cedir	Milk	200Wt	400W	600W	Scrotal	Doc
<b>-5.5</b>	<b>-1.2</b>		<b>+5</b>	<b>+11</b>	<b>+23</b>	<b>+38</b>	<b>+1.7</b>	<b>+30</b>
38%	53%		28%	57%	57%	66%	68%	46%

Top 1 % Birthweight, Top 5% Gestation Length & Scrotal Size. A really safe sire for first calving heifers. He is a 50/50 Lim-Flex bull that is quiet and predicatable. Deep girthed and soft.

**Purchaser:** \_\_\_\_\_ \$ \_\_\_\_\_



**Tattoo:** MANPJ9  
**BLACK**

**Born:** 01/08/2013  
**POLLED**

**Grade:** Pure

COLE WULF HUNT (IMUPB9207) (P) (HB\*) (PN) (AA)  
WULFS NOBEL PRIZE 3861N (IMUPY3861) (HP) (B) (PN) (AA)  
WULFS CASUAL 3161C (PEDPB9209) (PU)

**Sire: WULFS WARBONNET 6254W (IMUPE6254) (HP\*) (HB) (PN) (AC)**  
JCL LODESTAR 27L (PEDPW9275) (P) (B) (PU) (AC)  
WULFS SPIRAL 6254S (IMUPB6254) (P) (B) (PU)  
MISS WULFETTE 1264L (PEDPW1264) (B) (PU)  
COLE BLACK TANK 24P (PEDPZ9838) (P) (B) (PU)  
COLE SUDDEN IMPACT 50S (IMUPB9839) (P) (B) (PN)  
COLE 100G (IMUPS9830) (P) (B) (PU)

**Dam: MANALI MISS MONTANA G167 (MANPG167) (P) (B) (PU)**  
COLE FIRST DOWN 46D (IMUPP3731) (HP) (HB\*) (PN) (AC)  
COLE 50K (IMUPV9845) (P) (B) (PU)  
JHLL MS BITTERROOT 041B (PEDPM9844) (PU)

LIMOUSIN BREEDPLAN EBVs								
Gest	B. Wt.	Cedir	Milk	200Wt	400W	600W	Scrotal	Doc
-1.8	+2.0	-0.2	+10	+28	+50	+70		+35
63%	52%	30%	33%	49%	47%	46%		49%

Top 5% 200, 400 & 600 Day Weights. Top 5% Milk. Top 5% all Index Values. Out of arguably the best female to ever set foot on our place, by Wulfs Warbonnet. Here is a definite sire prospect. Tremendous feet, legs and temperament with great length and soft carcase. This bull shows why Coleman genetics are so strong in all the top USA Limousin female herds. This bull would definitely be fitting of stud duties.

**Purchaser:** \_\_\_\_\_ **\$** \_\_\_\_\_



**Tattoo:** MANPJ173  
**APRICOT**

**Born:** 24/07/2013  
**POLLED**

**Grade:** Pure

**Sire:** MANALI SUDDEN IMPACT G130 (MANPG130) (P) (B) (PU)

COLE BLACK TANK 24P (PEDPZ9838) (P) (B) (PU)  
COLE SUDDEN IMPACT 50S (IMUPB9839) (P) (B) (PN)  
COLE 100G (IMUPS9830) (P) (B) (PU)  
COLE FIRST DOWN 46D (IMUPP3731) (HP) (HB\*) (PN) (AC)  
COLE 50K (IMUPV9845) (P) (B) (PU)  
JHLL MS BITTERROOT 041B (PEDPM9844) (PU)  
FTL DOUBLE AGENT 307E (IMUPQ8381) (P) (R) (PN)  
TURANVILLE ULTIMATE U3 (DHRPU3) (S) (PU)  
TOBIAS BARBARA (TMEPB11) (PU)

**Dam:** TURANVILLE SARAH A5 (DHRPA5) (P) (PU)

TURANVILLE ULTIMATECHOICE U24 (DHRPU24) (P) (PU)  
TURANVILLE SARAH W30 (DHRPW30) (P) (PU)  
TURANVILLE W F SARAH U27 (DHRPU27) (PU)

LIMOUSIN BREEDPLAN EBVs								
Gest	B. Wt.	Cedir	Milk	200Wt	400W	600W	Scrotal	Doc
-4.3	+1.8	+2.2	+7	+22	+40	+65	+0.5	+33
68%	58%	27%	36%	57%	56%	65%	66%	51%

Top 5% 600 Day Weight, Top 10% Mature Cow Weight & Gestation Length. Top 10% all Index Values. Out of one of our favourite old Turanville cows by Manali Sudden Impact G130. This red calf has so much power and grunt like his father. Displaying tremendous temperament, as have all the progeny of this bull's dam. He will definitely grab your attention.

**Purchaser:** \_\_\_\_\_ \$ \_\_\_\_\_



**Tattoo:** MAN2J16  
**BLACK**

**Born:** 30/07/2013  
**POLLED**

**Grade:** Two

**Sire:** MANALI FERTILISER F85 (MANPF85) (P) (B) (PU)

DVFC COOKIE MONSTER 108H (IMUPT108) (P) (B) (PN) (AA)  
WATERFORD MONSTER MAGIC (HASPA2) (P) (B) (PN)  
LLOYD'S BLACK POLLED QUEST (DLLPQ449) (P) (B) (PU)  
GLENVIEW WESLEY (GNVPW48) (PU) (AA)  
MANALI BETTY BOO B6 (MANPB6) (P) (PU)  
TURANVILLE BARBARA U1 (DHRPU1) (P) (PU)  
ANGUS COLEMAN PRODUCTION 608 (XAA0B608) (HP) (PF)  
COLE WINDFALL 144W (IMU1E144) (P) (HB\*) (PU)  
COLE MISS FIRSTDOWN 6162S (PEDPB9819) (P) (B) (PU)

**Dam:** MANALI G27 (MAN1G27) (P) (B) (PU)

WATERFORD MONSTER MAGIC (HASPA2) (P) (B) (PN)  
MANALI D26 (MAN1D26) (B) (PU)  
MANALI BASE A107 (MAN0A107) (PU)

LIMOUSIN BREEDPLAN EBVs								
Gest	B. Wt.	Cedir	Milk	200Wt	400W	600W	Scrotal	Doc
-3.5			+4	+24	+35	+59	+0.8	+30
43%			30%	50%	48%	49%	43%	41%

Top 10% 200 & 600 Day Weight. Look at this bull from every direction and it's hard not to like him. Square hipped, thick topped with a huge hind quarter, this is a really cool bull.

**Purchaser:** \_\_\_\_\_ \$ \_\_\_\_\_



# Lot 6

# MANALI J148

**Tattoo:** MAN0J148  
**BLACK**

**Born:** 07/07/2013  
**POLLED**

**Grade:** Lim-Flex

ANGUS G A R PRECISION 1680 (XAA0K1680) (HP) (B) (PF)  
ANGUS COLEMAN PRODUCTION 608 (XAA0B608) (HP) (PF)  
ANGUS COLEMAN BLACKCAP 211 (XAA0X211) (HP) (PF)

**Sire: COLE WINDFALL 144W (IMU1E144) (P) (HB\*) (PU)**  
COLE FIRST DOWN 46D (IMUPP3731) (HP) (HB\*) (PN) (AC)  
COLE MISS FIRSTDOWN 6162S (PEDPB9819) (P) (B) (PU)  
COLE 18K (PEDPV9818) (P) (B) (PU)  
DVFC COOKIE MONSTER 108H (IMUPT108) (P) (B) (PN) (AA)  
WATERFORD MONSTER MAGIC (HASPA2) (P) (B) (PN)  
LLOYD'S BLACK POLLED QUEST (DLLPQ449) (P) (B) (PU)

**Dam: ANGUS MANALI BASE DAM F124 (XAA0F124) (PU)**

LIMOUSIN BREEDPLAN EBVs								
Gest	B. Wt.	Cedir	Milk	200Wt	400W	600W	Scrotal	Doc
<b>-4.8</b>	<b>+1.2</b>		<b>+6</b>	<b>+23</b>	<b>+41</b>	<b>+71</b>	<b>+0.7</b>	<b>+13</b>
70%	57%		28%	58%	56%	67%	69%	52%

Top 5% Mature Cow Weight & 600 Day Weight. Top 10% Gestation Length & 400 Day Weight. If you want power and performance, this Cole Windfall son is your bull. High growth and plenty of shape. A herd improver in every sense.

*Purchaser:* \_\_\_\_\_ \$ \_\_\_\_\_

# Lot 7

# MANALI J127

**Tattoo:** MAN0J127  
**BLACK**

**Born:** 26/07/2013  
**POLLED**

**Grade:** Lim-Flex

ANGUS G A R PRECISION 1680 (XAA0K1680) (HP) (B) (PF)  
ANGUS COLEMAN PRODUCTION 608 (XAA0B608) (HP) (PF)  
ANGUS COLEMAN BLACKCAP 211 (XAA0X211) (HP) (PF)

**Sire: COLE WINDFALL 144W (IMU1E144) (P) (HB\*) (PU)**  
COLE FIRST DOWN 46D (IMUPP3731) (HP) (HB\*) (PN) (AC)  
COLE MISS FIRSTDOWN 6162S (PEDPB9819) (P) (B) (PU)  
COLE 18K (PEDPV9818) (P) (B) (PU)  
DVFC COOKIE MONSTER 108H (IMUPT108) (P) (B) (PN) (AA)  
WATERFORD MONSTER MAGIC (HASPA2) (P) (B) (PN)  
LLOYD'S BLACK POLLED QUEST (DLLPQ449) (P) (B) (PU)

**Dam: ANGUS MANALI BASE DAM F142 (XAA0F142) (PU)**

LIMOUSIN BREEDPLAN EBVs								
Gest	B. Wt.	Cedir	Milk	200Wt	400W	600W	Scrotal	Doc
<b>-5.9</b>	<b>+1.6</b>		<b>+7</b>	<b>+27</b>	<b>+46</b>	<b>+79</b>	<b>+2.0</b>	<b>+25</b>
69%	57%		26%	57%	55%	67%	69%	51%

Top 1% 600 Day Weight and Mature Cow Weight. Top 5% Scrotal Size, Gestation Length, 200 & 400 Day Weight. Top 5% Self Replacing Index and Heavy Steer Terminal Index. Plenty of growth for age and style in this high volume Cole Windfall son. A bull that will add kilos to calves without taking away finishing ability.

*Purchaser:* \_\_\_\_\_ \$ \_\_\_\_\_

# Lot 8

# MANALI J128

**Tattoo:** MANPJ128  
**BLACK**

**Born:** 15/07/2013  
**SCURRED**

**Grade:** Pure

LKCC BLACK NUGGET 906U (PEDPN7646) (P) (B) (PN)  
LKCC TOMAHAWKS TOUCHDOWN 100X (IMUPJ8812) (HP) (HB) (PN) (AC)  
LKCC SMITH CATTLE 755S (PEDPN7639) (P) (B) (PU)

**Sire:** COLE FIRST DOWN 46D (IMUPP3731) (HP) (HB\*) (PN) (AC)

CT P42 J (PEDPU8509) (PU)  
2 155P (PEDPU8511) (P) (B) (PU)  
WEEK MISS ECLAIR 200H (PED2U8510) (P) (PU)  
WULFS GUARDIAN 5074G (IMUPS5074) (P) (B) (PN) (AA)  
PREMIER GUARDIAN V77 (PREPV77) (P) (B) (PF)  
WHITE LAKES EXOTIC (WLPE20) (PN)

**Dam:** PREMIER GOLDIE A61 (PREPA61) (P) (B) (PF)

BROADMEADOWS TOMBOLA (IMBFB11) (PN) (AA)  
PREMIER U10 (PREPU10) (P) (PF)  
WHITE LAKES GOLDIE (WLPG24) (HP) (PN)

LIMOUSIN BREEDPLAN EBVs								
Gest	B. Wt.	Cedir	Milk	200Wt	400W	600W	Scrotal	Doc
-3.5	+0.9	+1.2	+9	+19	+41	+66	+1.5	+20
73%	66%	45%	54%	65%	65%	71%	71%	60%

Top 1% Mature Cow Weight. Top 5% 600 Day Weight, Carcase Weight, Self Replacing and Heavy Steer Index. Top 10% 400 Day Weight, Scrotal Size & Domestic Terminal Index. With the predictability of Cole First Down and from a great Premier cow family, this magic genetic cross is evident in this early maturing bull. Loads of carcase and a wonderful temperament.

*Purchaser:* \_\_\_\_\_ \$ \_\_\_\_\_

# Lot 9

# MANALI J144

**Tattoo:** MAN1J144  
**BLACK**

**Born:** 25/07/2013  
**POLLED**

**Grade:** Lim-Flex

WULFS RANSOM 3059R (IMUPA3059) (HP\*) (PU) (AA)  
ROMN TOW TRUCK 111T (IMUPC111) (HP\*) (R) (PN) (AA)  
ROMN RITA 28R (PEDPA9609) (P) (PU)

**Sire:** MANALI FRAMEWORK F44 (MANPF44) (P) (PU)

TURANVILLE ULTIMATECHOICE U24 (DHRPU24) (P) (PU)  
TURANVILLE SARAH W30 (DHRPW30) (P) (PU)  
TURANVILLE W F SARAH U27 (DHRPU27) (PU)  
ANGUS GARDENS PRIME TIME USA3246 (XAA0N3246) (HP) (B) (PF)  
ANGUS MERRIC RIVERS PRIME TIME S22 (XAA0S9022) (HP) (PF)  
ANGUS GLENAROUA CRESTA E13 (XAA0E1385) (HP) (PF)

**Dam:** ANGUS MANALI BASE DAM W13 (XAA0W9013) (HP) (PF)

LIMOUSIN BREEDPLAN EBVs								
Gest	B. Wt.	Cedir	Milk	200Wt	400W	600W	Scrotal	Doc
-8.6	-0.1		+9	+21	+41	+67	+2.0	+19
42%	53%		34%	57%	56%	66%	69%	48%

Top 1% Gestation Length, Top 5% Birth Weight, 600 Day Weight, Mature Cow Weight, & Scrotal Circumference. Top 10% Milk, 400 Day Weight, Self Replacing & Heavy Steer Index Values. A magnificent Lim-Flex bull that is as good as any in the sale. Depth of muscle, spring of rib and soft. A real favourite.

*Purchaser:* \_\_\_\_\_ \$ \_\_\_\_\_

# Lot 10

# MANALI J184

**Tattoo:** MAN0J184  
**BLACK**

**Born:** 30/07/2013  
**POLLED**

**Grade:** Lim-Flex

ANGUS G A R PRECISION 1680 (XAA0K1680) (HP) (B) (PF)  
ANGUS COLEMAN PRODUCTION 608 (XAA0B608) (HP) (PF)  
ANGUS COLEMAN BLACKCAP 211 (XAA0X211) (HP) (PF)

**Sire: COLE WINDFALL 144W (IMU1E144) (P) (HB\*) (PU)**

COLE FIRST DOWN 46D (IMUPP3731) (HP) (HB\*) (PN) (AC)  
COLE MISS FIRSTDOWN 6162S (PEDPB9819) (P) (B) (PU)  
COLE 18K (PEDPV9818) (P) (B) (PU)  
DVFC COOKIE MONSTER 108H (IMUPT108) (P) (B) (PN) (AA)  
WATERFORD MONSTER MAGIC (HASPA2) (P) (B) (PN)  
LLOYD'S BLACK POLLED QUEST (DLLPQ449) (P) (B) (PU)

**Dam: ANGUS MANALI BASE DAM F112 (XAA0F112) (PU)**

LIMOUSIN BREEDPLAN EBVs								
Gest	B. Wt.	Cedir	Milk	200Wt	400W	600W	Scrotal	Doc
<b>-4.9</b>	<b>+1.5</b>		<b>+8</b>	<b>+26</b>	<b>+45</b>	<b>+74</b>	<b>+2.9</b>	<b>+16</b>
69%	57%		26%	57%	55%	66%	69%	51%

Top 1% Scrotal Size. Top 5% Mature Cow Weight, 200, 400 & 600 Day Weight. Top 10% Gestation Length. A big scrotal, high performance Cole Windfall son that will knock the scales down. Length and shape.

*Purchaser:* \_\_\_\_\_ \$ \_\_\_\_\_

# Lot 11

# MANALI J152

**Tattoo:** MAN0J152  
**BLACK**

**Born:** 17/07/2013  
**POLLED**

**Grade:** Lim-Flex

ANGUS G A R PRECISION 1680 (XAA0K1680) (HP) (B) (PF)  
ANGUS COLEMAN PRODUCTION 608 (XAA0B608) (HP) (PF)  
ANGUS COLEMAN BLACKCAP 211 (XAA0X211) (HP) (PF)

**Sire: COLE WINDFALL 144W (IMU1E144) (P) (HB\*) (PU)**

COLE FIRST DOWN 46D (IMUPP3731) (HP) (HB\*) (PN) (AC)  
COLE MISS FIRSTDOWN 6162S (PEDPB9819) (P) (B) (PU)  
COLE 18K (PEDPV9818) (P) (B) (PU)  
GLENVIEW WESLEY (GNVPW48) (PU) (AA)  
MANALI VICTORY D1 (MANPD1) (PU)  
MILLROSE MOSSIE (MRSFT8091) (PU)

**Dam: ANGUS MANALI BASE DAM F110 (XAA0F110) (PU)**

LIMOUSIN BREEDPLAN EBVs								
Gest	B. Wt.	Cedir	Milk	200Wt	400W	600W	Scrotal	Doc
<b>-8.4</b>	<b>-0.4</b>			<b>+18</b>	<b>+35</b>	<b>+55</b>	<b>+2.4</b>	<b>+12</b>
69%	55%			56%	54%	65%	68%	48%

Top 1% Gestation Length & Scrotal Size. Top 5% Birth Weight. Sleek coated and thick, this is a real industry bull. He combines Cole Windfall's growth and softness but maintains enough carcase to add yield.

*Purchaser:* \_\_\_\_\_ \$ \_\_\_\_\_

# Lot 12

# MANALI J181

**Tattoo:** MAN0J152  
**BLACK**

**Born:** 17/07/2013  
**POLLED**

**Grade:** Lim-Flex

ANGUS G A R PRECISION 1680 (XAA0K1680) (HP) (B) (PF)  
ANGUS COLEMAN PRODUCTION 608 (XAA0B608) (HP) (PF)  
ANGUS COLEMAN BLACKCAP 211 (XAA0X211) (HP) (PF)

**Sire: COLE WINDFALL 144W (IMU1E144) (P) (HB\*) (PU)**  
COLE FIRST DOWN 46D (IMUPP3731) (HP) (HB\*) (PN) (AC)  
COLE MISS FIRSTDOWN 6162S (PEDPB9819) (P) (B) (PU)  
COLE 18K (PEDPV9818) (P) (B) (PU)  
GLENVIEW WESLEY (GNVPW48) (PU) (AA)  
MANALI VICTORY D1 (MANPD1) (PU)  
MILLROSE MOSSIE (MRSFT8091) (PU)

**Dam: ANGUS MANALI BASE DAM F110 (XAA0F110) (PU)**

LIMOUSIN BREEDPLAN EBVs								
Gest	B. Wt.	Cedir	Milk	200Wt	400W	600W	Scrotal	Doc
<b>-8.4</b>	<b>-0.4</b>			<b>+18</b>	<b>+35</b>	<b>+55</b>	<b>+2.4</b>	<b>+12</b>
69%	55%			56%	54%	65%	68%	48%

Top 1% Gestation Length & Scrotal Size. Top 5% Birth Weight. Sleek coated and thick, this is a real industry bull. He combines Cole Windfall's growth and softness but maintains enough carcass to add yield.

*Purchaser:* \_\_\_\_\_ \$ \_\_\_\_\_

# Lot 13

# MANALI J160

**Tattoo:** MAN1J160  
**APRICOT**

**Born:** 01/08/2013  
**POLLED**

**Grade:** Lim-Flex

WULFS RANSOM 3059R (IMUPA3059) (HP\*) (PU) (AA)  
ROMN TOW TRUCK 111T (IMUPC111) (HP\*) (R) (PN) (AA)  
ROMN RITA 28R (PEDPA9609) (P) (PU)

**Sire: MANALI FREDERICK F50 (MANPF50) (P) (PU)**  
FTL DOUBLE AGENT 307E (IMUPQ8381) (P) (R) (PN)  
TURANVILLE BARBARA U1 (DHRPU1) (P) (PU)  
TOBIAS BARBARA (TMEPB11) (PU)  
DVFC COOKIE MONSTER 108H (IMUPT108) (P) (B) (PN) (AA)  
WATERFORD MONSTER MAGIC (HASPA2) (P) (B) (PN)  
LLOYD'S BLACK POLLED QUEST (DLLPQ449) (P) (B) (PU)

**Dam: ANGUS MANALI BASE DAM F122 (XAA0F122) (PU)**

LIMOUSIN BREEDPLAN EBVs								
Gest	B. Wt.	Cedir	Milk	200Wt	400W	600W	Scrotal	Doc
<b>-6.1</b>		<b>+2.9</b>	<b>+7</b>	<b>+16</b>	<b>+30</b>	<b>+48</b>	<b>+1.1</b>	<b>+42</b>
40%		27%	35%	53%	48%	48%	43%	48%

Top 5% Gestation Length. A powerful red polled three quarter Limousin bull that has tremendous carcass depth and softness. A wonderful Terminal Sire prospect.

*Purchaser:* \_\_\_\_\_ \$ \_\_\_\_\_



# Lot 14

# MANALI J177

**Tattoo:** MAN0J177  
**BLACK**

**Born:** 30/07/2013  
**POLLED**

**Grade:** Lim-Flex

ANGUS G A R PRECISION 1680 (XAA0K1680) (HP) (B) (PF)  
ANGUS COLEMAN PRODUCTION 608 (XAA0B608) (HP) (PF)  
ANGUS COLEMAN BLACKCAP 211 (XAA0X211) (HP) (PF)

**Sire:** COLE WINDFALL 144W (IMU1E144) (P) (HB\*) (PU)

COLE FIRST DOWN 46D (IMUPP3731) (HP) (HB\*) (PN) (AC)  
COLE MISS FIRSTDOWN 6162S (PEDPB9819) (P) (B) (PU)  
COLE 18K (PEDPV9818) (P) (B) (PU)  
DVFC COOKIE MONSTER 108H (IMUPT108) (P) (B) (PN) (AA)  
WATERFORD MONSTER MAGIC (HASPA2) (P) (B) (PN)  
LLOYD'S BLACK POLLED QUEST (DLLPQ449) (P) (B) (PU)

**Dam:** ANGUS MANALI BASE DAM F106 (XAA0F106) (PU)

LIMOUSIN BREEDPLAN EBVs								
Gest	B. Wt.	Cedir	Milk	200Wt	400W	600W	Scrotal	Doc
<b>-4.5</b>	<b>+1.6</b>		<b>+7</b>	<b>+25</b>	<b>+44</b>	<b>+76</b>	<b>+1.5</b>	<b>+16</b>
69%	57%		26%	57%	55%	66%	69%	51%

Top 1% 600 Day Weight. Top 5% Mature Cow weight. Top 10% Gestation Length. Scrotal Size, Heavy Steer Index, 200 & 400 Day Weight. A black polled sire with great carcass and spine, tremendous length of body and a wonderful hind-quarter. This bull ticks all the boxes.

*Purchaser:* \_\_\_\_\_ \$ \_\_\_\_\_

# Lot 15

# MANALI J140

**Tattoo:** MAN0J140  
**BLACK**

**Born:** 15/07/2013  
**POLLED**

**Grade:** Lim-Flex

ANGUS G A R PRECISION 1680 (XAA0K1680) (HP) (B) (PF)  
ANGUS COLEMAN PRODUCTION 608 (XAA0B608) (HP) (PF)  
ANGUS COLEMAN BLACKCAP 211 (XAA0X211) (HP) (PF)

**Sire:** COLE WINDFALL 144W (IMU1E144) (P) (HB\*) (PU)

COLE FIRST DOWN 46D (IMUPP3731) (HP) (HB\*) (PN) (AC)  
COLE MISS FIRSTDOWN 6162S (PEDPB9819) (P) (B) (PU)  
COLE 18K (PEDPV9818) (P) (B) (PU)  
DVFC COOKIE MONSTER 108H (IMUPT108) (P) (B) (PN) (AA)  
WATERFORD MONSTER MAGIC (HASPA2) (P) (B) (PN)  
LLOYD'S BLACK POLLED QUEST (DLLPQ449) (P) (B) (PU)

**Dam:** ANGUS MANALI BASE DAM F113 (XAA0F113) (PU)

LIMOUSIN BREEDPLAN EBVs								
Gest	B. Wt.	Cedir	Milk	200Wt	400W	600W	Scrotal	Doc
<b>-9.1</b>	<b>-0.4</b>		<b>+6</b>	<b>+19</b>	<b>+35</b>	<b>+56</b>	<b>+1.5</b>	<b>+35</b>
69%	57%		26%	57%	55%	66%	69%	51%

Top 1% Gestation Length. Top 5% Birth Weight. Top 10% Scrotal Size. The Cole Windfalls really get that balance between carcass and softness. This bull has enough grunt to breed terminal calves and the softness for his daughters to be productive and have plenty of milk.

*Purchaser:* \_\_\_\_\_ \$ \_\_\_\_\_

**Tattoo:** DWRPJ66  
**BLACK**

**Born:** 21/11/2013  
**POLLED**

**Grade:** Pure

DVFC COOKIE MONSTER 108H (IMUPT108) (P) (B) (PN) (AA)  
WATERFORD MONSTER MAGIC (HASPA2) (P) (B) (PN)  
LLOYD'S BLACK POLLED QUEST (DLLPQ449) (P) (B) (PU)

**Sire:** MANALI FICTION F53 (MANPF53) (P) (HB\*) (PU) (AA)

CHAZ FIRST CHOICE 6004F (IMUPR6004) (HP) (HB) (PN) (AA)  
TURANVILLE BARBARA Y9 (DHRPY9) (P) (B) (PU)  
TURANVILLE BARBARA U1 (DHRPU1) (P) (PU)  
WULFS EXPLOSION 0184E (IMUPQ184) (P) (B) (PN) (AA)  
RIVIERE VUE VERY GOOD (TJJPV9) (P) (R) (PF)  
LIMBRI QUEEN (LBLPQ138) (PN)

**Dam:** TIMOR HANNA 34 (TRPA735) (R) (PU)

TIMOR MARKSMAN (TRFM75) (PS)  
TIMOR HANNA 8 (TRFS140) (PU)  
TIMOR HANNA (TRFP96) (PN)

LIMOUSIN BREEDPLAN EBVs								
Gest	B. Wt.	Cedir	Milk	200Wt	400W	600W	Scrotal	Doc
-3.2	+2.2	+1.3	+2	+22	+35	+57		+46
46%	66%	37%	40%	62%	57%	59%		51%

I thought this was the best Manali Fiction calf at Oakvale Limousin's dispersal sale and nothing about him since has changed my mind. Really thick topped and square sided, this bull has sire appeal and shows why his sire is getting carcass winners all across the Eastern seaboard.

*Purchaser:* \_\_\_\_\_ \$ \_\_\_\_\_

**Tattoo:** DWRPK15  
**BLACK**

**Born:** 16/04/2014  
**POLLED**

**Grade:** Pure

DVFC COOKIE MONSTER 108H (IMUPT108) (P) (B) (PN) (AA)  
WATERFORD MONSTER MAGIC (HASPA2) (P) (B) (PN)  
LLOYD'S BLACK POLLED QUEST (DLLPQ449) (P) (B) (PU)

**Sire:** MANALI FICTION F53 (MANPF53) (P) (HB\*) (PU) (AA)

CHAZ FIRST CHOICE 6004F (IMUPR6004) (HP) (HB) (PN) (AA)  
TURANVILLE BARBARA Y9 (DHRPY9) (P) (B) (PU)  
TURANVILLE BARBARA U1 (DHRPU1) (P) (PU)  
ROMN FORTUNE (PEDPA9115) (PU)  
ROMN JUSTICE (IMUPU34) (HP) (PN) (AA)  
ROMN LADY ROCK 57G (PEDPA9116) (PU)

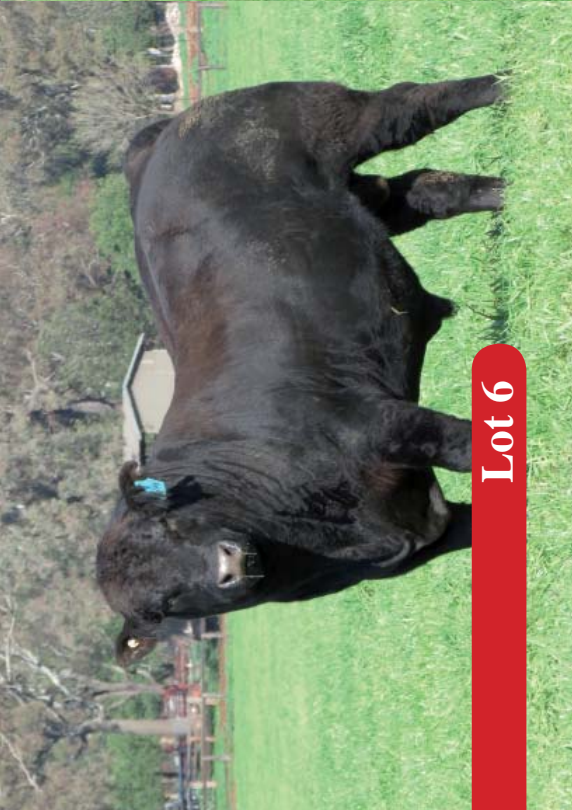
**Dam:** OAKVALE FUCHSIA AMAZE (DWRPF18) (P) (PU)

WULFS RAMBLER 8400X (IMUPJ8082) (S) (R) (PN) (AA)  
OAKVALE DAISY AMAZE (DWRPD28) (S) (B) (PU)  
JUNCTION AMAZE S18 (JXPS18) (P) (B) (PU)

LIMOUSIN BREEDPLAN EBVs								
Gest	B. Wt.	Cedir	Milk	200Wt	400W	600W	Scrotal	Doc
-3.7	+1.9	+2.3	+8	+24	+40	+60		+54
42%	64%	36%	40%	56%	55%	58%		47%

Top 10% Heavy Steer Terminal Index, 200 & 600 Day Weight. Off the second top priced cow at Oakvale Limousin dispersal sale. Clean polled, balanced and thick. By Manali Fiction, this calf is a super soft young bull and has plenty of sire appeal.

*Purchaser:* \_\_\_\_\_ \$ \_\_\_\_\_



Lot 6



Lot 7

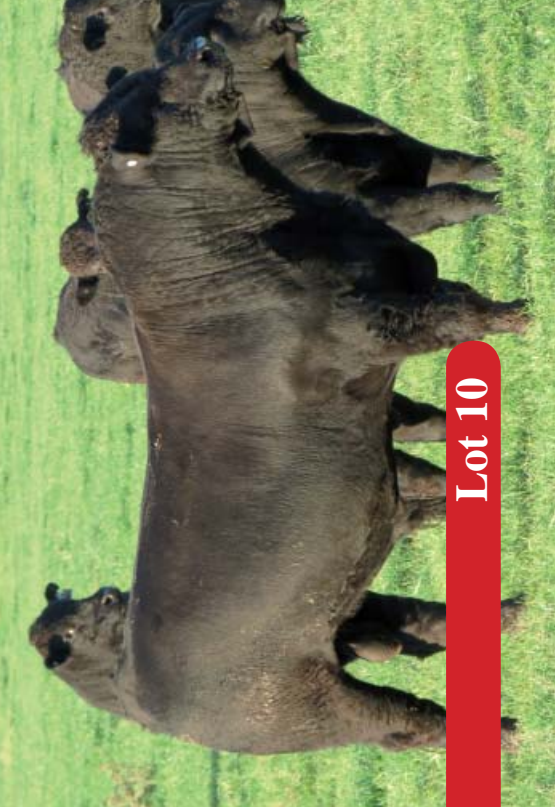


Lot 8



Lot 9

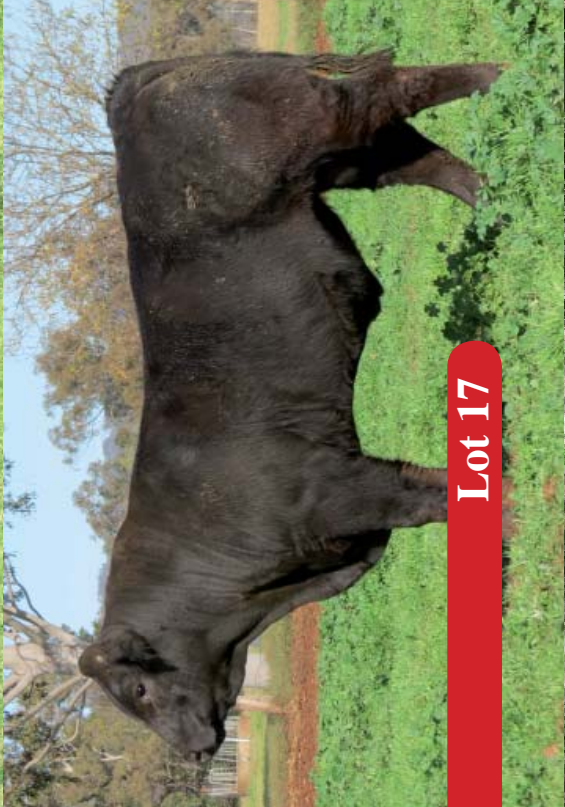




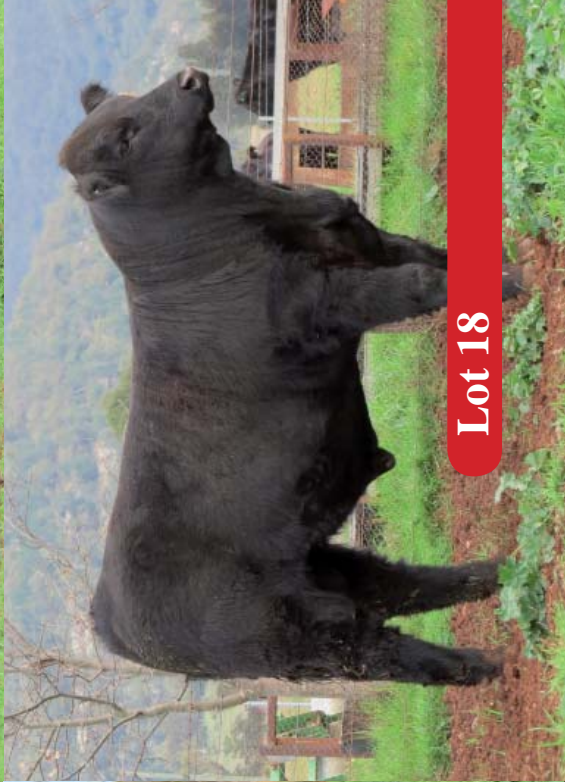
Lot 10



Lot 16



Lot 17



Lot 18





Lot 19



Lot 20



Lot 23

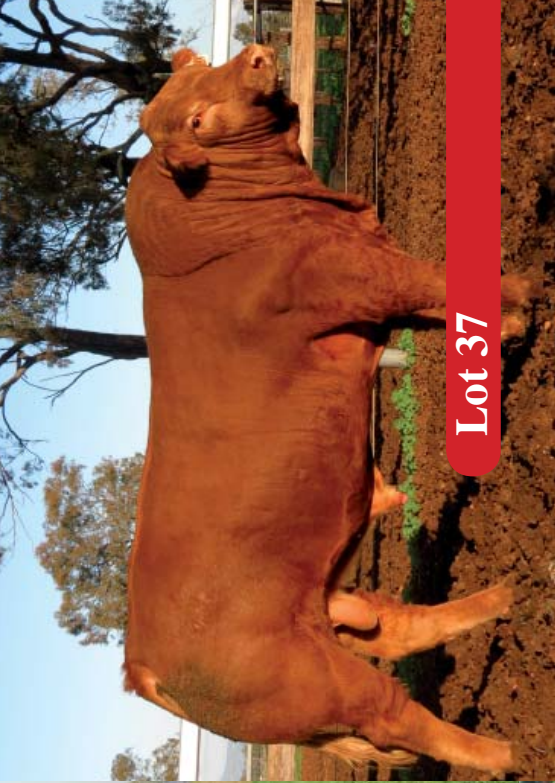


Lot 32





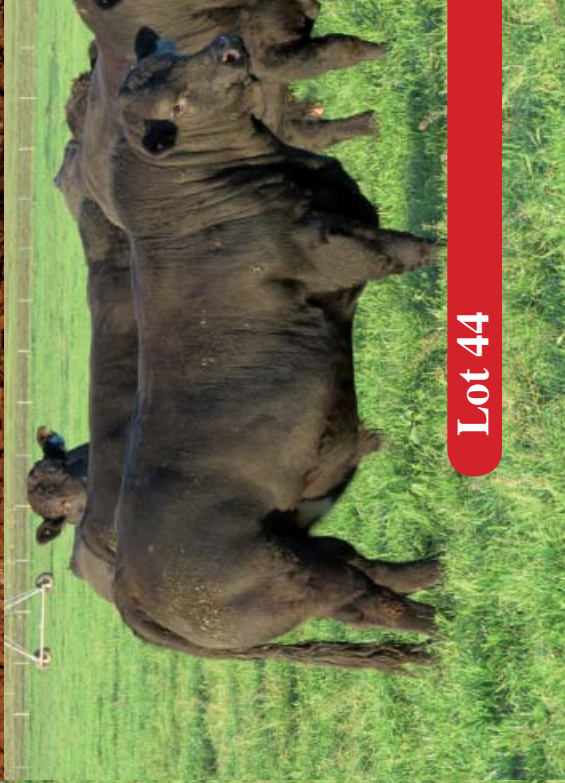
Lot 34



Lot 37



Lot 40



Lot 44

# Lot 18

# MANALI WESTWIND K34

**Tattoo:** MANPK34

**Born:** 24/04/2014

**Grade:** Pure

**HOMO. BLACK (PEDIGREE)**

**HOMO. POLLED (BY PEDIGREE)**

JCL LODESTAR 27L (PEDPW9275) (P) (B) (PU) (AC)

KAJO RESPONDER 120R (PEDPA3144) (HP) (2B) (PN)

KAJO SHERYL SWOOPS 11H (PEDPT3498) (P) (B) (PU)

**Sire: AHCC WESTWIND W544 (IMUPE544) (HP\*) (HB\*) (PU)**

COLE WULF HUNT (IMUPB9207) (P) (HB\*) (PN) (AA)

AHCC MISS WULF HUNT R544 (IMUPA4622) (P) (B) (PU)

AHCC MISS OUTCROSS N844 (PEDPY1746) (P) (B) (PU)

LVLS FARMER JACK 5842M (PEDPX163) (P) (HB\*) (PU)

LVLS FARMER JOHN 7428P (PEDPZ446) (P) (B) (PU)

LVLS7428L (PEDPW676) (P) (B) (PU)

**Dam: LVLS 9066U (IMUPD9066) (HP\*) (HB\*) (PU)**

COLE WULF HUNT (IMUPB9207) (P) (HB\*) (PN) (AA)

LVLS9066R (PEDPA287) (B) (PU)

LVLS9066N (PED2Y451) (P) (B) (PU)

LIMOUSIN BREEDPLAN EBVs								
Gest	B. Wt.	Cedir	Milk	200Wt	400W	600W	Scrotal	Doc
				<b>+22</b>	<b>+41</b>	<b>+56</b>		<b>+36</b>
				48%	39%	39%		48%

Top 10% 400 Day Weight, Domestic Steer Terminal Index, Self Replacing Index and Heavy Steer Terminal Index. From the heart of the Hager Cattle Company herd, these next few calves are full brothers to the top priced bull in the Hager Cattle Company sale, North Dakota USA. K34 is so soft and deep. A different style of bull but displays so much carcase quality.

Purchaser: \_\_\_\_\_ \$ \_\_\_\_\_

# Lot 19

# MANALI WESTWIND K39

**Tattoo:** MANPK39

**Born:** 24/04/2014

**Grade:** Pure

**HOMO. BLACK (PEDIGREE)**

**HOMO. POLLED (BY PEDIGREE)**

JCL LODESTAR 27L (PEDPW9275) (P) (B) (PU) (AC)

KAJO RESPONDER 120R (PEDPA3144) (HP) (2B) (PN)

KAJO SHERYL SWOOPS 11H (PEDPT3498) (P) (B) (PU)

**Sire: AHCC WESTWIND W544 (IMUPE544) (HP\*) (HB\*) (PU)**

COLE WULF HUNT (IMUPB9207) (P) (HB\*) (PN) (AA)

AHCC MISS WULF HUNT R544 (IMUPA4622) (P) (B) (PU)

AHCC MISS OUTCROSS N844 (PEDPY1746) (P) (B) (PU)

LVLS FARMER JACK 5842M (PEDPX163) (P) (HB\*) (PU)

LVLS FARMER JOHN 7428P (PEDPZ446) (P) (B) (PU)

LVLS7428L (PEDPW676) (P) (B) (PU)

**Dam: LVLS 9066U (IMUPD9066) (HP\*) (HB\*) (PU)**

COLE WULF HUNT (IMUPB9207) (P) (HB\*) (PN) (AA)

LVLS9066R (PEDPA287) (B) (PU)

LVLS9066N (PED2Y451) (P) (B) (PU)

LIMOUSIN BREEDPLAN EBVs								
Gest	B. Wt.	Cedir	Milk	200Wt	400W	600W	Scrotal	Doc
				<b>+19</b>	<b>+38</b>	<b>+51</b>		<b>+36</b>
				48%	39%	39%		48%

Top 10% Domestic Terminal Index. Another Soft ET Hager Cattle Company calf. An absolute belly dragger that will soften cows and maintain kilos. These bulls' sisters are really exciting.

Purchaser: \_\_\_\_\_ \$ \_\_\_\_\_

# Lot 20

# MANALI WESTWIND K26

**Tattoo:** MANPK26

**Born:** 01/05/2014

**Grade:** Pure

**HOMO. BLACK (PEDIGREE)**

**HOMO. POLLED (BY PEDIGREE)**

JCL LODESTAR 27L (PEDPW9275) (P) (B) (PU) (AC)  
KAJO RESPONDER 120R (PEDPA3144) (HP) (2B) (PN)  
KAJO SHERYL SWOOPS 11H (PEDPT3498) (P) (B) (PU)

**Sire: AHCC WESTWIND W544 (IMUPE544) (HP\*) (HB\*) (PU)**

COLE WULF HUNT (IMUPB9207) (P) (HB\*) (PN) (AA)  
AHCC MISS WULF HUNT R544 (IMUPA4622) (P) (B) (PU)  
AHCC MISS OUTCROSS N844 (PEDPY1746) (P) (B) (PU)  
LVLS FARMER JACK 5842M (PEDPX163) (P) (HB\*) (PU)  
LVLS FARMER JOHN 7428P (PEDPZ446) (P) (B) (PU)  
LVLS7428L (PEDPW676) (P) (B) (PU)

**Dam: LVLS 9066U (IMUPD9066) (HP\*) (HB\*) (PU)**

COLE WULF HUNT (IMUPB9207) (P) (HB\*) (PN) (AA)  
LVLS9066R (PEDPA287) (B) (PU)  
LVLS9066N (PED2Y451) (P) (B) (PU)

LIMOUSIN BREEDPLAN EBVs								
Gest	B. Wt.	Cedir	Milk	200Wt	400W	600W	Scrotal	Doc
				<b>+21</b>	<b>+40</b>	<b>+54</b>		<b>+28</b>
				48%	39%	39%		48%

Top 10% Domestic Terminal Index and Self Replacing Index. With carcase shape and depth, you won't find Purebred Limousin calves in Australia with any more depth than this fellow. One really cool calf.

*Purchaser:* \_\_\_\_\_ \$ \_\_\_\_\_

# Lot 21

# MANALI J183

**Tattoo:** MANPJ183

**Born:** 29/07/2013

**Grade:** Pure

**BLACK**

**POLLED**

COLE BLACK TANK 24P (PEDPZ9838) (P) (B) (PU)  
COLE SUDDEN IMPACT 50S (IMUPB9839) (P) (B) (PN)  
COLE 100G (IMUPS9830) (P) (B) (PU)

**Sire: MANALI SUDDEN IMPACT G166 (MANPG166) (P) (B) (PU)**

COLE FIRST DOWN 46D (IMUPP3731) (HP) (HB\*) (PN) (AC)  
COLE 50K (IMUPV9845) (P) (B) (PU)  
JHLL MS BITTERROOT 041B (PEDPM9844) (PU)  
KENSAL THUNDER DOWN UNDER (KGPT43) (P) (HB) (PN) (AA)  
KENSAL YEPPON Y56 (KGPY56) (P) (HB) (PN)  
KENSAL BLACK PEARL R137 (KGPR137) (P) (B) (PU)

**Dam: MANALI CONNIE E15 (MANPE15) (P) (2B) (PU)**

CHAZ FIRST CHOICE 6004F (IMUPR6004) (HP) (HB) (PN) (AA)  
BARWONGA CONNIE 11 (GXBPB11) (P) (2B) (PU)  
BARWONGA CONNIE 6 (GXBPY6) (P) (2B) (PU)

LIMOUSIN BREEDPLAN EBVs								
Gest	B. Wt.	Cedir	Milk	200Wt	400W	600W	Scrotal	Doc
<b>-6.1</b>	<b>+1.5</b>	<b>-0.2</b>	<b>+3</b>	<b>+27</b>	<b>+47</b>	<b>+71</b>	<b>+0.5</b>	<b>+45</b>
70%	58%	27%	32%	58%	58%	67%	67%	48%

Top 1% Mature Cow Weight. Top 5% Gestation Length, 200, 400 & 600 Day Weight. Top 5% all Index Values. High volume and high growth. Sired by the sale topper from our inaugural sale. A bull with a great skin and hair type like his sire.

*Purchaser:* \_\_\_\_\_ \$ \_\_\_\_\_

**Tattoo:** MANPJ198  
**RED**

**Born:** 28/09/2013  
**HORNED**

**Grade:** Pure

EXLR JUDO 459J (PEDPB9295) (P) (B) (PU)  
EXLR NATIVE 7133N (IMUPY7133) (HP) (HB) (PN) (AC)  
TRAK EXLR ANNIE (PEDPB9298) (P) (B) (PU)

**Sire:** MANALI NATIVE G56 (MANPG56) (P) (B) (PU)

TURANVILLE ULTIMATECHOICE U24 (DHRPU24) (P) (PU)  
TURANVILLE SARAH W30 (DHRPW30) (P) (PU)  
TURANVILLE W F SARAH U27 (DHRPU27) (PU)  
LKCC TOMAHAWKS TOUCHDOWN (IMUPJ8812) (HP) (HB) (PN) (AC)  
COLE FIRST DOWN 46D (IMUPP3731) (HP) (HB\*) (PN) (AC)  
2 155P (PEDPU8511) (P) (B) (PU)

**Dam:** MANALI FIRST LADY G138 (MANPG138) (P) (B) (PU)

FTL DOUBLE AGENT 307E (IMUPQ8381) (P) (R) (PN)  
TURANVILLE BARBARA U1 (DHRPU1) (P) (PU)  
TOBIAS BARBARA (TMEPB11) (PU)

LIMOUSIN BREEDPLAN EBVs								
Gest	B. Wt.	Cedir	Milk	200Wt	400W	600W	Scrotal	Doc
-2.9	+1.9	+2.8	+10	+23	+41	+59	+2.0	+54
47%	54%	31%	39%	58%	56%	62%	62%	50%

Top 5% Milk & Scrotal Size. Top 10% Docility, Self Replacing & Heavy Steer Terminal Index. Top 10% 400 & 600 Day Weight. Cherry red and thick for this First Down heifer's first calf. A lovely quiet carcase bull that would be great for vealer production.

Purchaser: \_\_\_\_\_ \$ \_\_\_\_\_

**Tattoo:** MAN1J90  
**BLACK**

**Born:** 01/08/2013  
**POLLED**

**Grade:** Lim-Flex

ANGUS G A R PRECISION 1680 (XAA0K1680) (HP) (B) (PF)  
ANGUS COLEMAN PRODUCTION 608 (XAA0B608) (HP) (PF)  
ANGUS COLEMAN BLACKCAP 211 (XAA0X211) (HP) (PF)

**Sire:** COLE WINDFALL 144W (IMU1E144) (P) (HB\*) (PU)

COLE FIRST DOWN 46D (IMUPP3731) (HP) (HB\*) (PN) (AC)  
COLE MISS FIRSTDOWN 6162S (PEDPB9819) (P) (B) (PU)  
COLE 18K (PEDPV9818) (P) (B) (PU)  
DVFC COOKIE MONSTER 108H (IMUPT108) (P) (B) (PN) (AA)  
WATERFORD MONSTER MAGIC (HASPA2) (P) (B) (PN)  
LLOYD'S BLACK POLLED QUEST (DLLPQ449) (P) (B) (PU)

**Dam:** MANALI D204 (MAN1D204) (P) (B) (PF)

MANALI BASE Z12 (MAN0Z12) (HP) (PF)

LIMOUSIN BREEDPLAN EBVs								
Gest	B. Wt.	Cedir	Milk	200Wt	400W	600W	Scrotal	Doc
-7.7	-0.8		+5	+15	+28	+46	+0.7	+36
69%	57%		26%	57%	55%	66%	69%	51%

Top 1% Gestation Length. Top 5% Birth Weight. Long bodied, soft and balanced with an excellent disposition.

Purchaser: \_\_\_\_\_ \$ \_\_\_\_\_



# Lot 24

# MANALI J116

**Tattoo:** MAN0J116  
**BLACK**

**Born:** 29/07/2013  
**POLLED**

**Grade:** Lim-Flex

ANGUS G A R PRECISION 1680 (XAA0K1680) (HP) (B) (PF)  
ANGUS COLEMAN PRODUCTION 608 (XAA0B608) (HP) (PF)  
ANGUS COLEMAN BLACKCAP 211 (XAA0X211) (HP) (PF)

**Sire: COLE WINDFALL 144W (IMU1E144) (P) (HB\*) (PU)**

COLE FIRST DOWN 46D (IMUPP3731) (HP) (HB\*) (PN) (AC)  
COLE MISS FIRSTDOWN 6162S (PEDPB9819) (P) (B) (PU)  
COLE 18K (PEDPV9818) (P) (B) (PU)  
DVFC COOKIE MONSTER 108H (IMUPT108) (P) (B) (PN) (AA)  
WATERFORD MONSTER MAGIC (HASPA2) (P) (B) (PN)  
LLOYD'S BLACK POLLED QUEST (DLLPQ449) (P) (B) (PU)

**Dam: ANGUS BASE E299 (XAA0E299) (HP) (PF)**

LIMOUSIN BREEDPLAN EBVs								
Gest	B. Wt.	Cedir	Milk	200Wt	400W	600W	Scrotal	Doc
<b>-6.0</b>	<b>-1.1</b>		<b>+5</b>	<b>+12</b>	<b>+22</b>	<b>+33</b>	<b>+0.3</b>	<b>+44</b>
70%	57%		26%	58%	56%	67%	70%	52%

Top 5% Birth Weight and Gestation Length. Soggy and stout describes J116. Just like his sire, really deep ribbed and easy doing.

*Purchaser:* \_\_\_\_\_ \$ \_\_\_\_\_

# Lot 25

# MANALI J3

**Tattoo:** MAN1J3  
**BLACK**

**Born:** 16/06/2013  
**POLLED**

**Grade:** Lim-Flex

ANGUS BON VIEW NEW DESIGN 1407 (XAA0S1407) (HP) (PF)  
ANGUS SITZ NEW DESIGN 458N (XAA0Y458) (HP) (B) (PF)  
ANGUS SITZ ELLUNAS ELITE 3308 (XAA0X8479) (HP) (B) (PF)

**Sire: MANALI G15 (MAN1G15) (P) (B) (PU)**

WATERFORD MONSTER MAGIC (HASPA2) (P) (B) (PN)  
MANALI NANCY E23 (MANPE23) (P) (PU)  
TURANVILLE NANOOK A4 (DHRPA4) (PU)  
WATERFORD MONSTER MAGIC (HASPA2) (P) (B) (PN)  
MANALI EXPRESSION E41 (MANPE41) (P) (B) (PU)  
MANALI JULIET C15 (MANPC15) (P) (B) (PU)

**Dam: MANALI G168 (MAN1G168) (P) (B) (PU)**

WATERFORD MONSTER MAGIC (HASPA2) (P) (B) (PN)  
ANGUS BASE E272 (XAA0E272) (HP) (PF)

LIMOUSIN BREEDPLAN EBVs								
Gest	B. Wt.	Cedir	Milk	200Wt	400W	600W	Scrotal	Doc
	<b>-1.3</b>		<b>+5</b>	<b>+12</b>	<b>+16</b>	<b>+21</b>	<b>+0.6</b>	<b>+23</b>
	54%		26%	57%	58%	67%	69%	47%

Top 1% Birth Weight. A heifer's first calf that has plenty of cover and finish. Great spine and a nice loose hide. In the top 1% of the breed for birth weight, so safe to use over heifers.

*Purchaser:* \_\_\_\_\_ \$ \_\_\_\_\_

**Tattoo:** MANPJ88  
**BLACK**

**Born:** 15/08/2013  
**POLLED**

**Grade:** Pure

COLE BLACK TANK 24P (PEDPZ9838) (P) (B) (PU)  
COLE SUDDEN IMPACT 50S (IMUPB9839) (P) (B) (PN)  
COLE 100G (IMUPS9830) (P) (B) (PU)

**Sire: MANALI SUDDEN IMPACT G166 (MANPG166) (P) (B) (PU)**

COLE FIRST DOWN 46D (IMUPP3731) (HP) (HB\*) (PN) (AC)  
COLE 50K (IMUPV9845) (P) (B) (PU)  
JHLL MS BITTERROOT 041B (PEDPM9844) (PU)  
WULFS BILLY BOY 4223B (PEDPT8414) (P) (B) (PU)  
SLVL BEEF 341E (IMUPQ341) (P) (HB) (PN) (AA)  
JDPM MISS GENERAL 170B (PEDPT8415) (B) (PU)

**Dam: BARWONGA A21 (GXBPA21) (P) (B) (PF)**

WLCC CYCLONE (IMUPH56) (P) (B) (PN)  
LLOYD'S BLACK KISS (DLLPK118) (B) (PN)  
OAKLEY POLLED MARY (DLLPH4) (P) (PU)

LIMOUSIN BREEDPLAN EBVs								
Gest	B. Wt.	Cedir	Milk	200Wt	400W	600W	Scrotal	Doc
<b>-0.7</b>	<b>+2.9</b>	<b>-3.4</b>	<b>+5</b>	<b>+27</b>	<b>+45</b>	<b>+70</b>	<b>+0.8</b>	<b>+21</b>
69%	58%	28%	37%	58%	57%	66%	68%	49%

Top 5% 200, 400 & 600 Day Weight. Top 5% Mature Cow Weight. Top 10% Heavy Steer Terminal Index. A purebred polled black bull that will add yield and growth. Plenty of length and shape.

*Purchaser:* \_\_\_\_\_ \$ \_\_\_\_\_

**Tattoo:** MANPJ11  
**BLACK**

**Born:** 23/07/2013  
**POLLED**

**Grade:** Pure

DVFC COOKIE MONSTER 108H (IMUPT108) (P) (B) (PN) (AA)  
WATERFORD MONSTER MAGIC (HASPA2) (P) (B) (PN)  
LLOYD'S BLACK POLLED QUEST (DLLPQ449) (P) (B) (PU)

**Sire: MANALI FERTILISER F85 (MANPF85) (P) (B) (PU)**

GLENVIEW WESLEY (GNVPW48) (PU) (AA)  
MANALI BETTY BOO B6 (MANPB6) (P) (PU)  
TURANVILLE BARBARA U1 (DHRPU1) (P) (PU)  
LKCC TOMAHAWKS TOUCHDOWN (IMUPJ8812) (HP) (HB) (PN) (AC)  
COLE FIRST DOWN 46D (IMUPP3731) (HP) (HB\*) (PN) (AC)  
2 155P (PEDPU8511) (P) (B) (PU)

**Dam: MANALI G48 (MANPG48) (P) (B) (PF)**

PREMIER GUARDIAN V77 (PREPV77) (P) (B) (PF)  
PREMIER GOLDIE A61 (PREPA61) (P) (B) (PF)  
PREMIER U10 (PREPU10) (P) (PF)

LIMOUSIN BREEDPLAN EBVs								
Gest	B. Wt.	Cedir	Milk	200Wt	400W	600W	Scrotal	Doc
<b>-3.5</b>	<b>+1.0</b>	<b>+1.5</b>	<b>+6</b>	<b>+21</b>	<b>+29</b>	<b>+48</b>	<b>-0.1</b>	<b>+31</b>
44%	56%	28%	38%	59%	61%	67%	68%	48%

Length & scope feature in this heifer's first calf. Long bodied and balanced.

*Purchaser:* \_\_\_\_\_ \$ \_\_\_\_\_

# Lot 28

# MANALI J119

**Tattoo:** MAN2J119  
**BLACK**

**Born:** 27/08/2013  
**POLLED**

**Grade:** Lim-Flex

WULFS RANSOM 3059R (IMUPA3059) (HP\*) (PU) (AA)  
ROMN TOW TRUCK 111T (IMUPC111) (HP\*) (R) (PN) (AA)  
ROMN RITA 28R (PEDPA9609) (P) (PU)

**Sire: MANALI FREDERICK F50 (MANPF50) (P) (PU)**

FTL DOUBLE AGENT 307E (IMUPQ8381) (P) (R) (PN)  
TURANVILLE BARBARA U1 (DHRPU1) (P) (PU)  
TOBIAS BARBARA (TMEPB11) (PU)  
CASTLEREAGH BLACK BEEF T129 (APWPT129) (P) (B) (PU)  
GLENVIEW WESLEY (GNVPW48) (PU) (AA)  
GLENVIEW UGIGI (GNVPU34) (B) (PU)

**Dam: MANALI ANGUS BASE C505 (MANIC505) (P) (B) (PU)**  
MANALI ANGUS BASE Z5 (MAN0Z5) (HP) (PF)

LIMOUSIN BREEDPLAN EBVs								
Gest	B. Wt.	Cedir	Milk	200Wt	400W	600W	Scrotal	Doc
<b>-4.6</b>	<b>-0.3</b>	<b>+1.4</b>	<b>+6</b>	<b>+13</b>	<b>+30</b>	<b>+48</b>	<b>+1.8</b>	<b>+26</b>
42%	52%	26%	36%	56%	54%	62%	64%	48%

Top 5% Birth Weight and Scrotal Size. Top 10% Gestation Length. Big scrotal and great shape. The F50's have plenty of depth and carcase and maintain fat cover.

Purchaser: \_\_\_\_\_ \$ \_\_\_\_\_

# Lot 29

# MANALI J150

**Tattoo:** MANPJ50  
**APRICOT**

**Born:** 08/08/2013  
**POLLED**

**Grade:** Pure

WULFS RANSOM 3059R (IMUPA3059) (HP\*) (PU) (AA)  
ROMN TOW TRUCK 111T (IMUPC111) (HP\*) (R) (PN) (AA)  
ROMN RITA 28R (PEDPA9609) (P) (PU)

**Sire: MANALI FRAMEWORK F44 (MANPF44) (P) (PU)**

TURANVILLE ULTIMATECHOICE U24 (DHRPU24) (P) (PU)  
TURANVILLE SARAH W30 (DHRPW30) (P) (PU)  
TURANVILLE W F SARAH U27 (DHRPU27) (PU)  
WLCC NO SUBSTITUTE 1141 (IMUFE169) (PN)  
WHITE LAKES SIRE POWER (WLPS45) (P) (PN) (AA)  
WHITE LAKES LOST LOVE (WLPL6) (P) (PF)

**Dam: WHITE LAKES CANDY FLOSS (WLPC60) (P) (PF)**

HYMOUR (IMFFM2007) (PN)  
WHITE LAKES XTRAVAGANZA (WLPX51) (P) (PF)  
WHITE LAKES RHYTHM OF THE NIGHT (WLPR31) (P) (B) (PF)

LIMOUSIN BREEDPLAN EBVs								
Gest	B. Wt.	Cedir	Milk	200Wt	400W	600W	Scrotal	Doc
<b>-3.4</b>	<b>+0.6</b>	<b>+3.8</b>	<b>+9</b>	<b>+17</b>	<b>+30</b>	<b>+37</b>	<b>+1.6</b>	<b>+21</b>
52%	59%	33%	40%	61%	60%	67%	69%	52%

Top 10% Calving Ease Direct, Milk and Scrotal Size. Red, polled, clean shouldered and from a really productive White Lakes cow. An ideal vealer sire.

Purchaser: \_\_\_\_\_ \$ \_\_\_\_\_

**Tattoo:** MAN1J97  
**BLACK**

**Born:** 10/08/2013  
**POLLED**

**Grade:** Lim-Flex

ANGUS G A R PRECISION 1680 (XAA0K1680) (HP) (B) (PF)  
ANGUS COLEMAN PRODUCTION 608 (XAA0B608) (HP) (PF)  
ANGUS COLEMAN BLACKCAP 211 (XAA0X211) (HP) (PF)

**Sire:** COLE WINDFALL 144W (IMU1E144) (P) (HB\*) (PU)  
COLE FIRST DOWN 46D (IMUPP3731) (HP) (HB\*) (PN) (AC)  
COLE MISS FIRSTDOWN 6162S (PEDPB9819) (P) (B) (PU)  
COLE 18K (PEDPV9818) (P) (B) (PU)  
CASTLEREAGH BLACK BEEF T129 (APWPT129) (P) (B) (PU)  
GLENVIEW WESLEY (GNVPW48) (PU) (AA)  
GLENVIEW UGIGI (GNVPU34) (B) (PU)

**Dam:** MANALI C509 (MAN1C509) (P) (B) (PU)  
MANALI RECIP DAM Z9 (MAN0Z9) (HP) (PF)

LIMOUSIN BREEDPLAN EBVs								
Gest	B. Wt.	Cedir	Milk	200Wt	400W	600W	Scrotal	Doc
<b>-4.9</b>	<b>-0.6</b>		<b>+8</b>	<b>+13</b>	<b>+27</b>	<b>+41</b>	<b>+0.7</b>	<b>+12</b>
69%	56%		25%	56%	55%	66%	69%	50%

Top 5% Birth Weight. Top 10% Gestation Length. A clean shouldered and soft bull safe for using over heifers.

Purchaser: \_\_\_\_\_ \$ \_\_\_\_\_

**Tattoo:** MANPJ134  
**BLACK**

**Born:** 29/07/2013  
**SCURRED**

**Grade:** Pure

COLE BLACK TANK 24P (PEDPZ9838) (P) (B) (PU)  
COLE SUDDEN IMPACT 50S (IMUPB9839) (P) (B) (PN)  
COLE 100G (IMUPS9830) (P) (B) (PU)

**Sire:** MANALI SUDDEN IMPACT G130 (MANPG130) (P) (B) (PU)  
COLE FIRST DOWN 46D (IMUPP3731) (HP) (HB\*) (PN) (AC)  
COLE 50K (IMUPV9845) (P) (B) (PU)  
JHLL MS BITTERROOT 041B (PEDPM9844) (PU)  
TOMAHAWKS BLACK FRONTIER 117C (IMUPN117) (HP) (HB) (PN)  
TIMOR BLACK POLL DREAM (TRPD19) (P) (B) (PU)  
TIMOR HANNA 34 (TRPA735) (R) (PU)

**Dam:** OAKVALE FREESIA AMAZE (DWRPF19) (P) (B) (PU)  
WULFS RAMBLER 8400X (IMUPJ8082) (S) (R) (PN) (AA)  
OAKVALE DANDYLINE (DWRPD29) (P) (PU)  
JUNCTION AMAZE S18 (JXPS18) (P) (B) (PU)

LIMOUSIN BREEDPLAN EBVs								
Gest	B. Wt.	Cedir	Milk	200Wt	400W	600W	Scrotal	Doc
<b>-3.4</b>		<b>+1.0</b>	<b>+8</b>	<b>+20</b>	<b>+38</b>	<b>+58</b>	<b>+1.0</b>	<b>+17</b>
37%		27%	29%	48%	43%	43%	32%	43%

Top 10% 600 Day Weight and Self Replacing Index. This bull displays a soft skin and hair type with plenty of length.

Purchaser: \_\_\_\_\_ \$ \_\_\_\_\_

**Tattoo:** MAN1J82  
**BLACK**

**Born:** 15/07/2013  
**POLLED**

**Grade:** Lim-Flex

ANGUS G A R PRECISION 1680 (XAA0K1680) (HP) (B) (PF)  
ANGUS COLEMAN PRODUCTION 608 (XAA0B608) (HP) (PF)  
ANGUS COLEMAN BLACKCAP 211 (XAA0X211) (HP) (PF)  
**Sire: COLE WINDFALL 144W (IMU1E144) (P) (HB\*) (PU)**  
COLE FIRST DOWN 46D (IMUPP3731) (HP) (HB\*) (PN) (AC)  
COLE MISS FIRSTDOWN 6162S (PEDPB9819) (P) (B) (PU)  
COLE 18K (PEDPV9818) (P) (B) (PU)  
DVFC COOKIE MONSTER 108H (IMUPT108) (P) (B) (PN) (AA)  
WATERFORD MONSTER MAGIC (HASPA2) (P) (B) (PN)  
LLOYD'S BLACK POLLED QUEST (DLLPQ449) (P) (B) (PU)  
**Dam: MANALI BASE D211 (MAN1D211) (P) (B) (PF)**  
MANALI BASE Z16 (MAN0Z16) (HP) (PF)

LIMOUSIN BREEDPLAN EBVs								
Gest	B. Wt.	Cedir	Milk	200Wt	400W	600W	Scrotal	Doc
<b>-6.3</b>	<b>-0.5</b>		<b>+4</b>	<b>+14</b>	<b>+29</b>	<b>+50</b>	<b>+2.0</b>	<b>+25</b>
69%	57%		26%	57%	55%	66%	69%	51%

Top 5% Gestation Length, Birth Weight & Scrotal Size. Another soft, deep girthed Lim-Flex bull that will give scope to breeding decisions.

Purchaser: \_\_\_\_\_ \$ \_\_\_\_\_

**Born:** 27/08/2013  
**BLACK**

**Grade:** Commercial Lim-Flex  
**POLLED**

WULFS RANSOM 3059R (IMUPA3059) (HP\*) (PU) (AA)  
ROMN TOW TRUCK 111T (IMUPC111) (HP\*) (R) (PN) (AA)  
ROMN RITA 28R (PEDPA9609) (P) (PU)  
**Sire: MANALI FRAMEWORK F44 (MANPF44) (P) (PU)**  
TURANVILLE ULTIMATECHOICE U24 (DHRPU24) (P) (PU)  
TURANVILLE SARAH W30 (DHRPW30) (P) (PU)  
TURANVILLE W F SARAH U27 (DHRPU27) (PU)

**Dam: LIM-FLEX COMMERCIAL COW**

A large framed, deep sided, soft bull.

Purchaser: \_\_\_\_\_ \$ \_\_\_\_\_



**Born:** 20/08/2013  
**BLACK**

**Grade:** Commercial Lim-Flex  
**POLLED**

WULFS RANSOM 3059R (IMUPA3059) (HP\*) (PU) (AA)  
ROMN TOW TRUCK 111T (IMUPC111) (HP\*) (R) (PN) (AA)  
ROMN RITA 28R (PEDPA9609) (P) (PU)

**Sire: MANALI FRAMEWORK F44 (MANPF44) (P) (PU)**

TURANVILLE ULTIMATECHOICE U24 (DHRPU24) (P) (PU)  
TURANVILLE SARAH W30 (DHRPW30) (P) (PU)  
TURANVILLE W F SARAH U27 (DHRPU27) (PU)

**Dam: ANGUS COMMERCIAL COW**

Plenty of length and butt profile. An ideal vealer sire.

*Purchaser:* \_\_\_\_\_ \$ \_\_\_\_\_

**Born:** 25/07/2013  
**APRICOT**

**Grade:** Commercial Limousin  
**HORNED**

WULFS RANSOM 3059R (IMUPA3059) (HP\*) (PU) (AA)  
ROMN TOW TRUCK 111T (IMUPC111) (HP\*) (R) (PN) (AA)  
ROMN RITA 28R (PEDPA9609) (P) (PU)

**Sire: MANALI FRAMEWORK F44 (MANPF44) (P) (PU)**

TURANVILLE ULTIMATECHOICE U24 (DHRPU24) (P) (PU)  
TURANVILLE SARAH W30 (DHRPW30) (P) (PU)  
TURANVILLE W F SARAH U27 (DHRPU27) (PU)

**Dam: LIMOUSIN COMMERCIAL COW**

A neat red horned bull with balance, plenty of spine and carcase. A bull with a real commercial style.

*Purchaser:* \_\_\_\_\_ \$ \_\_\_\_\_

**Born:** 01/09/2013  
**BLACK**

**Grade:** Commercial Lim-Flex  
**POLLED**

WULFS RANSOM 3059R (IMUPA3059) (HP\*) (PU) (AA)  
ROMN TOW TRUCK 111T (IMUPC111) (HP\*) (R) (PN) (AA)  
ROMN RITA 28R (PEDPA9609) (P) (PU)

**Sire: MANALI FRAMEWORK F44 (MANPF44) (P) (PU)**

TURANVILLE ULTIMATECHOICE U24 (DHRPU24) (P) (PU)  
TURANVILLE SARAH W30 (DHRPW30) (P) (PU)  
TURANVILLE W F SARAH U27 (DHRPU27) (PU)

**Dam: LIM-FLEX COMMERCIAL COW**

Thick topped with plenty of capacity. An ideal bull to add to a set of Angus cows.

*Purchaser:* \_\_\_\_\_ \$ \_\_\_\_\_

**Born:** 25/07/2013  
**APRICOT**

**Grade:** Commercial Lim-Flex  
**POLLED**

COLE BLACK TANK 24P (PEDPZ9838) (P) (B) (PU)  
COLE SUDDEN IMPACT 50S (IMUPB9839) (P) (B) (PN)  
COLE 100G (IMUPS9830) (P) (B) (PU)

**Sire: MANALI SUDDEN IMPACT G130 (MANPG130) (P) (B) (PU)**

COLE FIRST DOWN 46D (IMUPP3731) (HP) (HB\*) (PN) (AC)  
COLE 50K (IMUPV9845) (P) (B) (PU)  
JHLL MS BITTERROOT 041B (PEDPM9844) (PU)

**Dam: LIM-FLEX COMMERCIAL COW**

Another great bull by Manali Sudden Impact G130. With carcase and softness he is a real quality individual with great performance.

*Purchaser:* \_\_\_\_\_ \$ \_\_\_\_\_

**Born:** 20/08/2013  
**BLACK**

**Grade:** Commercial Limousin  
**POLLED**

WULFS RANSOM 3059R (IMUPA3059) (HP\*) (PU) (AA)  
ROMN TOW TRUCK 111T (IMUPC111) (HP\*) (R) (PN) (AA)  
ROMN RITA 28R (PEDPA9609) (P) (PU)

**Sire: MANALI FRAMEWORK F44 (MANPF44) (P) (PU)**

TURANVILLE ULTIMATECHOICE U24 (DHRPU24) (P) (PU)  
TURANVILLE SARAH W30 (DHRPW30) (P) (PU)  
TURANVILLE W F SARAH U27 (DHRPU27) (PU)

**Dam: LIMOUSIN COMMERCIAL COW**

Carcase shape and softness in this quality bull. A sire with tradition Limousin style.

*Purchaser:* \_\_\_\_\_ \$ \_\_\_\_\_

**Born:** 06/09/2013  
**BLACK**

**Grade:** Commercial Lim-Flex  
**POLLED**

WULFS RANSOM 3059R (IMUPA3059) (HP\*) (PU) (AA)  
ROMN TOW TRUCK 111T (IMUPC111) (HP\*) (R) (PN) (AA)  
ROMN RITA 28R (PEDPA9609) (P) (PU)

**Sire: MANALI FRAMEWORK F44 (MANPF44) (P) (PU)**

TURANVILLE ULTIMATECHOICE U24 (DHRPU24) (P) (PU)  
TURANVILLE SARAH W30 (DHRPW30) (P) (PU)  
TURANVILLE W F SARAH U27 (DHRPU27) (PU)

**Dam: LIM-FLEX COMMERCIAL COW**

Lots of carcass and spine to this early maturing black polled calf.

*Purchaser:* \_\_\_\_\_ \$ \_\_\_\_\_

**Born:** 20/07/2013  
**APRICOT**

**Grade:** Commercial Lim-Flex  
**POLLED**

COLE BLACK TANK 24P (PEDPZ9838) (P) (B) (PU)  
COLE SUDDEN IMPACT 50S (IMUPB9839) (P) (B) (PN)  
COLE 100G (IMUPS9830) (P) (B) (PU)

**Sire: MANALI SUDDEN IMPACT G130 (MANPG130) (P) (B) (PU)**  
COLE FIRST DOWN 46D (IMUPP3731) (HP) (HB\*) (PN) (AC)  
COLE 50K (IMUPV9845) (P) (B) (PU)  
JHLL MS BITTERROOT 041B (PEDPM9844) (PU)

**Dam: LIM-FLEX COMMERCIAL COW**

A red bull with shape. Ideal for terminal production.

*Purchaser:* \_\_\_\_\_ \$ \_\_\_\_\_

**Born:** 10/08/2013  
**BLACK**

**Grade:** Commercial Lim-Flex  
**POLLED**

WULFS RANSOM 3059R (IMUPA3059) (HP\*) (PU) (AA)  
ROMN TOW TRUCK 111T (IMUPC111) (HP\*) (R) (PN) (AA)  
ROMN RITA 28R (PEDPA9609) (P) (PU)

**Sire: MANALI FRAMEWORK F44 (MANPF44) (P) (PU)**  
TURANVILLE ULTIMATECHOICE U24 (DHRPU24) (P) (PU)  
TURANVILLE SARAH W30 (DHRPW30) (P) (PU)  
TURANVILLE W F SARAH U27 (DHRPU27) (PU)

**Dam: LIM-FLEX COMMERCIAL COW**

High growth and plenty of carcase for this Limousin calf. A great terminal producer.

*Purchaser:* \_\_\_\_\_ \$ \_\_\_\_\_



**Born:** 23/08/2013  
**BLACK**

**Grade:** Commercial Lim-Flex  
**POLLED**

WULFS RANSOM 3059R (IMUPA3059) (HP\*) (PU) (AA)  
ROMN TOW TRUCK 111T (IMUPC111) (HP\*) (R) (PN) (AA)  
ROMN RITA 28R (PEDPA9609) (P) (PU)

**Sire:** MANALI FRAMEWORK F44 (MANPF44) (P) (PU)

TURANVILLE ULTIMATECHOICE U24 (DHRPU24) (P) (PU)  
TURANVILLE SARAH W30 (DHRPW30) (P) (PU)  
TURANVILLE W F SARAH U27 (DHRPU27) (PU)

**Dam:** LIM-FLEX COMMERCIAL COW

Another balanced Lim-Flex calf with shape. Deep sided and soft.

*Purchaser:* \_\_\_\_\_ \$ \_\_\_\_\_

**Born:** 06/09/2013  
**BLACK**

**Grade:** Commercial Lim-Flex  
**POLLED**

COLE BLACK TANK 24P (PEDPZ9838) (P) (B) (PU)  
COLE SUDDEN IMPACT 50S (IMUPB9839) (P) (B) (PN)  
COLE 100G (IMUPS9830) (P) (B) (PU)

**Sire:** MANALI SUDDEN IMPACT G130 (MANPG130) (P) (B) (PU)

COLE FIRST DOWN 46D (IMUPP3731) (HP) (HB\*) (PN) (AC)  
COLE 50K (IMUPV9845) (P) (B) (PU)  
JHLL MS BITTERROOT 041B (PEDPM9844) (PU)

**Dam:** LIM-FLEX COMMERCIAL COW

A deep bodied thick calf with plenty of performance. A nice carcass bull.

*Purchaser:* \_\_\_\_\_ \$ \_\_\_\_\_

**Born:** 02/07/2013  
**BLACK**

**Grade:** Commercial Lim-Flex  
**POLLED**

ANGUS BON VIEW NEW DESIGN 1407 (XAA0S1407) (HP) (PF)  
ANGUS SITZ NEW DESIGN 458N (XAA0Y458) (HP) (B) (PF)  
ANGUS SITZ ELLUNAS ELITE 3308 (XAA0X8479) (HP) (B) (PF)

**Sire: MANALI G15 (MAN1G15) (P) (B) (PU)**

WATERFORD MONSTER MAGIC (HASPA2) (P) (B) (PN)  
MANALI NANCY E23 (MANPE23) (P) (PU)  
TURANVILLE NANOOK A4 (DHRPA4) (PU)

**Dam: LIM-FLEX COMMERCIAL COW**

Another Lim-Flex bull showing carcass and spine. A heifers' first calf that will breed shape and yield.

*Purchaser:* \_\_\_\_\_ \$ \_\_\_\_\_



## MacCallum Inglis

MacCallum Inglis the Upper Hunter's leading Stock & Station Agency providing you with a wealth of local experience combined with the strength of Australia's foremost Bloodstock Auctioneers William Inglis.

**Specialising in the following areas:**

- Rural Property Sales • Residential Real Estate
- Livestock & Bloodstock Auctions • Merchandise & Clearing Sales
- Property Management

### 6540 1200

198 Kelly Street, Scone NSW 2337

[www.maccalluminglis.com.au](http://www.maccalluminglis.com.au)



# Buyers Instruction Slip

This slip must be completed by the purchaser and handed to the Sale Agent prior to leaving the sale.

**PLEASE SUPPLY FULL DETAILS AND ADDRESS.**

NAME .....

ADDRESS .....

.....

STATE.....P/CODE.....

PHONE .....FAX.....

EMAIL .....

CONSIGN TO.....

.....

BUYERS SIGNATURE.....

BUYERS PIC NO. ....

LOTS PURCHASED	PRICE

☐

Please tick box if transfer required.

Breed Society Membership ID.

.....

# Girl Power



**LVLS 9066U HP\* HB\* (IMUPD9066) – 3 sons sell.**

**Lot 18, Lot 19 and Lot 20. All of these outstanding yearling bulls are full brothers to the top priced bull at the 2015 Hagar Cattle Company Sale, North Dakota USA.**





# MacCallum<sup>MC</sup> LIVESTOCK

## rare BULL SALE

### *For pre-sale enquiries*

#### **The MacCallum Family**

Ph 02 6545 7292

Jim MacCallum 0428 680 502

Peter MacCallum 0429 492803

lynda@manali.com.au

www.manali.com.au

#### **MacCallum Inglis**

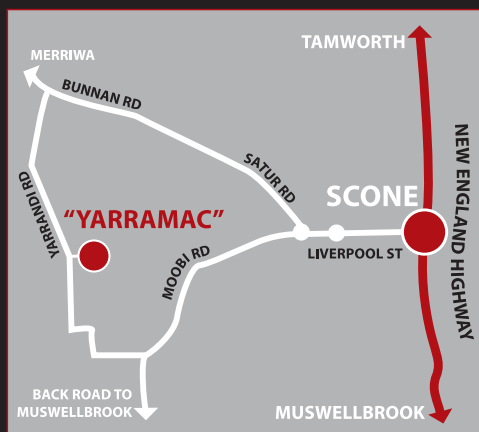
Ph 02 65 40 1200

Stuart Sheldrake 0403 129 357

Craig Devine 0438 451744

Heath Nichols 0458 717192

www.maccalluminglis.com.au



*We are a family supporting rare families. Please help us celebrate this great cause with dinner and refreshments provided after the sale.*